

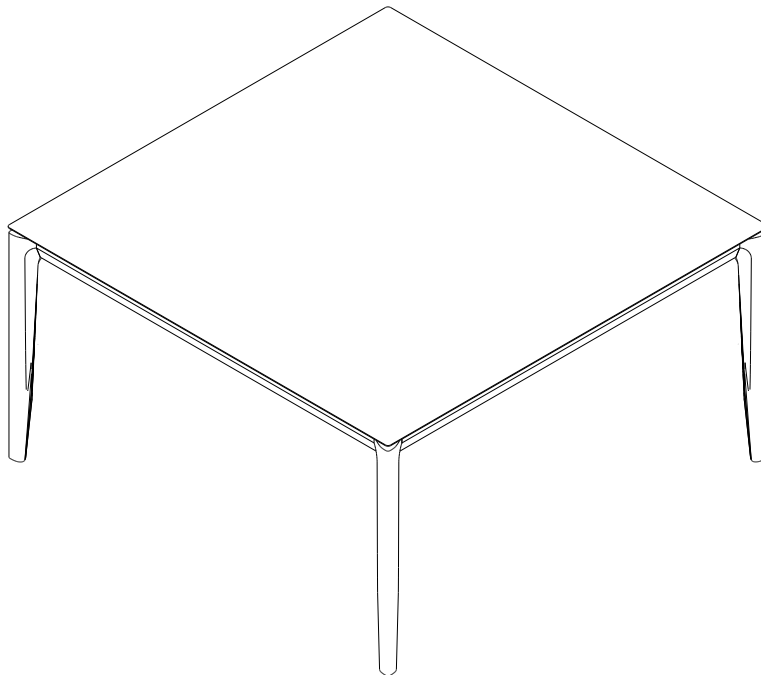
# Ethnicraft

## ASSEMBLY INSTRUCTIONS FOR TABLE INSTALLATION

---

### OAK BOK DINING TABLE

CODE	DESCRIPTION
51519	OAK BOK SQUARE DINING TABLE 145/145/76

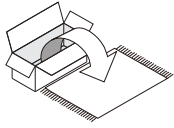


## OAK BOK DINING TABLE

### ASSEMBLY INSTRUCTIONS FOR DINING TABLE INSTALLATION



#### NOTE



- CAREFULLY OPEN THE CARTON,
- REMOVE CONTENTS AND LAY OUT ON CARPET OR THE PACKAGING CARTON BOX OR OTHER PROTECTIVE SURFACE TO AVOID DAMAGE.
- CHECK PACKAGE CONTENTS TO ASSURE ALL THE NECESSARY HARDWARE AND PARTS ARE RECEIVED UNDAMAGED.
- DO NOT USE DAMAGE OR DEFECTIVE PARTS/HARDWARE.
- CONTACT ETHNICRAFT FOR ANY MISSING PART AND /OR HARDWARE.

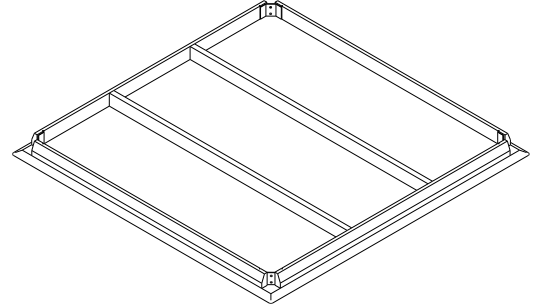


- READ THE ASSEMBLY INSTRUCTION BEFORE INSTALLATION AND CAREFULLY FOLLOW THE INSTRUCTION GIVEN.
- SEEK THE ADVICE OF A PROFESSIONAL IF YOU ARE NOT FAMILIAR WITH THESE INSTALLATIONS OR HAVE ANY DOUBTS ABOUT THE SAFETY OF THIS INSTALLATION.



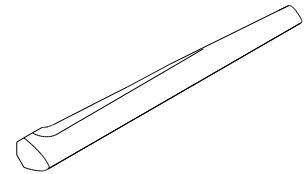
- IT IS ADVISABLE TO DO THIS ASSEMBLY WITH MINIMUM OF 2 PERSONS.

#### PARTS TO ASSEMBLE



##### A TABLE TOP 1piece

CODE	DESCRIPTION
P4931	TABLE TOP 145x145



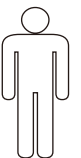
##### B LEG 4 pieces

CODE	DESCRIPTION
P4932	LEG

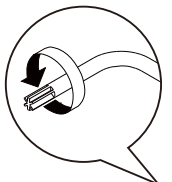
#### SYMBOLS



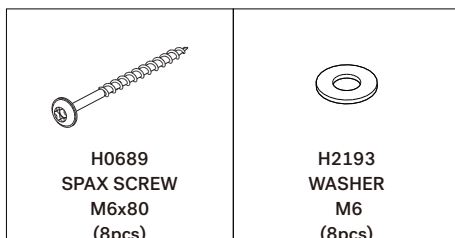
DIRECTION


NUMBER OF  
PERSONS NEEDED


USE HAND


USE TORX KEY  
TO TIGHTEN

#### HARDWARE ENCLOSED


H0689  
SPAX SCREW  
M6x80  
(8pcs)

H2193  
WASHER  
M6  
(8pcs)

#### TOOL

(Included in packaged)

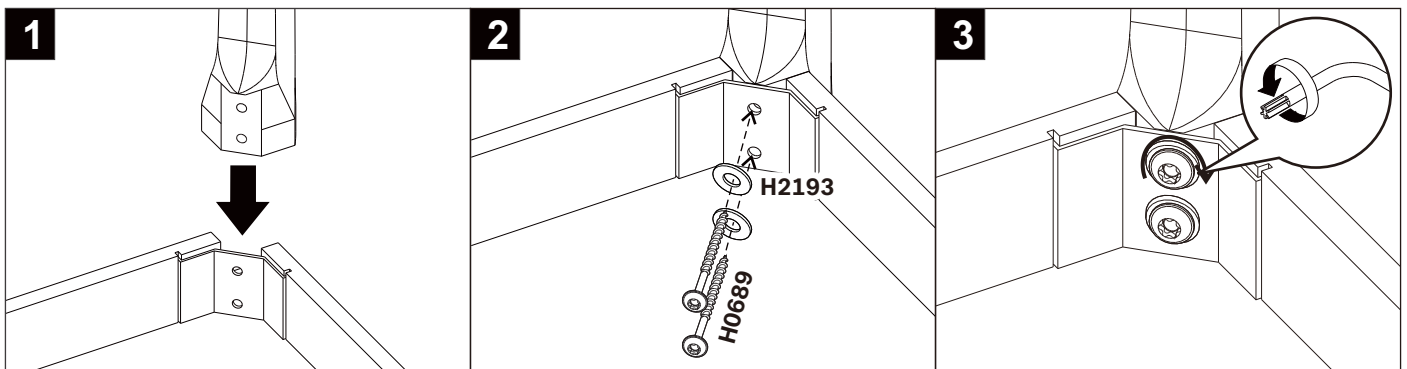
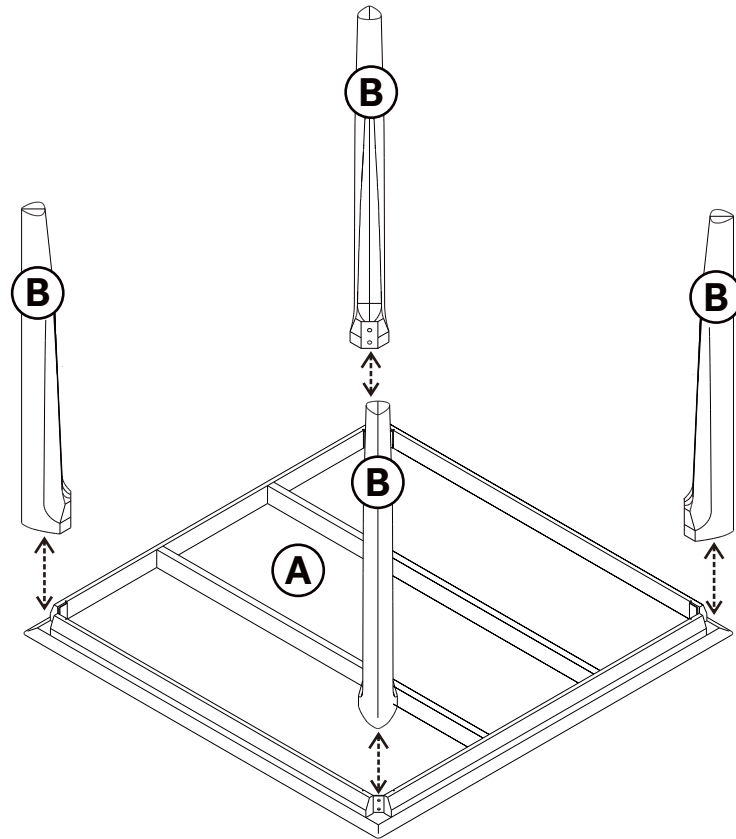

H2029  
TORX KEY  
(1pc)

## OAK BOK DINING TABLE

### ASSEMBLY INSTRUCTIONS FOR DINING TABLE INSTALLATION



#### CONNECTING THE LEGS AND THE TABLE TOP



- REPEAT STEP 1 TO STEP 3 FOR OTHER LEGS
- NOT TO TIGHT (TO BE RE-TIGHTENED AFTER 15 DAYS)